

# Baldwin High School

Client since 1991.

## BALDWIN-WHITEHALL SCHOOL DISTRICT

4653 CLAIRTON BOULEVARD  
PITTSBURGH, PA 15236-1817  
DR. RANDAL A. LUTZ,  
SUPERINTENDENT 412.884.6300

BID DECEMBER 1, 2005  
COMPLETED: JUNE 2009

COST: \$55,451,797  
STUDENTS: 2,000 (9-12)  
STATE REIMBURSEMENT 22.45%

ADDITION OF 311,000 S.F.  
ALTERATION OF 84,667 S.F.  
TOTAL AREA 395,667 S.F.

The new Baldwin High School houses:

- 108 instructional spaces
- 2 spectator gyms
- a 6-lane pool
- a large-group instruction room
- auditorium/stage with orchestra pit
- TV studio

The building design provides a free flow of movement, information and knowledge. A comfortable and easily supervised corridor network facilitates student movement and links clustered departments. Flexible, accessible, secure and sustainable are hallmarks of the design.

Construction took place in 5 major phases. Building materials are drawn from the Pittsburgh region.



**HHS DR**  
Architects/Engineers

## HHS DR ARCHITECTS / ENGINEERS

40 SHENANGO AVENUE, SHARON, PA 16146-1502

201 CENTURY BUILDING, 130 7TH STREET, PITTSBURGH, PA 15222-3413

724.981.8820 SHARON

800.447.3799

412.281.2280 PITTSBURGH

FGARGIULO@HHS DR.COM

ADOMETAKIS@HHS DR.COM

© 2016 by HHS DR, Inc. (#3217)

# Baldwin High School

Client since 1991.

## BALDWIN-WHITEHALL SCHOOL DISTRICT

4653 CLAIRTON BOULEVARD  
PITTSBURGH, PA 15236-1817  
DR. RANDAL A. LUTZ,  
SUPERINTENDENT 412.884.6300

BID DECEMBER 1, 2005  
COMPLETED: JUNE 2009

COST: \$55,451,797  
STUDENTS: 2,000 (9-12)  
STATE REIMBURSEMENT 22.45%

ADDITION OF 311,000 S.F.  
ALTERATION OF 84,667 S.F.  
TOTAL AREA 395,667 S.F.



724.981.8820 SHARON  
FGARGIULO@HHS DR.COM

**HHS DR ARCHITECTS / ENGINEERS**  
40 SHENANGO AVENUE, SHARON, PA 16146-1502  
201 CENTURY BUILDING, 130 7TH STREET, PITTSBURGH, PA 15222-3413  
**800.447.3799**  
412.281.2280 PITTSBURGH  
ADOMETAKIS@HHS DR.COM

© 2016 by HHS DR, Inc. #3217

# Baldwin High School

Client since 1991.

## BALDWIN-WHITEHALL SCHOOL DISTRICT

4653 CLAIRTON BOULEVARD  
PITTSBURGH, PA 15236-1817  
DR. RANDAL A. LUTZ,  
SUPERINTENDENT 412.884.6300

BID DECEMBER 1, 2005  
COMPLETED: JUNE 2009

COST: \$55,451,797  
STUDENTS: 2,000 (9-12)  
STATE REIMBURSEMENT 22.45%

ADDITION OF 311,000 S.F.  
ALTERATION OF 84,667 S.F.  
TOTAL AREA 395,667 S.F.



724.981.8820 SHARON  
FGARGIULO@HHS DR.COM

**HHS DR ARCHITECTS / ENGINEERS**  
40 SHENANGO AVENUE, SHARON, PA 16146-1502  
201 CENTURY BUILDING, 130 7TH STREET, PITTSBURGH, PA 15222-3413  
**800.447.3799**

412.281.2280 PITTSBURGH  
ADOMETAKIS@HHS DR.COM

© 2016 by HHS DR, Inc. #3217

# Baldwin High School

Client since 1991.

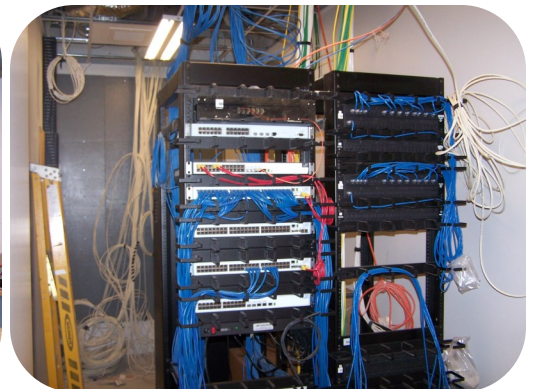
## **BALDWIN-WHITEHALL SCHOOL DISTRICT**

4653 CLAIRTON BOULEVARD  
PITTSBURGH, PA 15236-1817  
DR. RANDAL A. LUTZ,  
SUPERINTENDENT 412.884.6300

BID DECEMBER 1, 2005  
COMPLETED: JUNE 2009

COST: \$55,451,797  
STUDENTS: 2,000 (9-12)  
STATE REIMBURSEMENT 22.45%

ADDITION OF 311,000 S.F.  
ALTERATION OF 84,667 S.F.  
TOTAL AREA 395,667 S.F.



724.981.8820 SHARON  
FGARGIULO@HHS DR.COM

**HHS DR ARCHITECTS / ENGINEERS**  
40 SHENANGO AVENUE, SHARON, PA 16146-1502  
201 CENTURY BUILDING, 130 7TH STREET, PITTSBURGH, PA 15222-3413  
**800.447.3799**  
412.281.2280 PITTSBURGH  
ADOMETAKIS@HHS DR.COM

# Baldwin High School

Client since 1991.

## **BALDWIN-WHITEHALL SCHOOL DISTRICT**

4653 CLAIRTON BOULEVARD  
PITTSBURGH, PA 15236-1817  
DR. RANDAL A. LUTZ,  
SUPERINTENDENT 412.884.6300

BID DECEMBER 1, 2005  
COMPLETED: JUNE 2009

COST: \$55,451,797  
STUDENTS: 2,000 (9-12)  
STATE REIMBURSEMENT 22.45%

ADDITION OF 311,000 S.F.  
ALTERATION OF 84,667 S.F.  
TOTAL AREA 395,667 S.F.



This photo from Robin Rombach,  
Pittsburgh Post-Gazette.



724.981.8820 SHARON  
FGARGIULO@HHS DR.COM

**HHS DR ARCHITECTS / ENGINEERS**  
40 SHENANGO AVENUE, SHARON, PA 16146-1502  
201 CENTURY BUILDING, 130 7TH STREET, PITTSBURGH, PA 15222-3413  
**800.447.3799**  
412.281.2280 PITTSBURGH  
ADOMETAKIS@HHS DR.COM

© 2016 by HHS DR, Inc. #3217